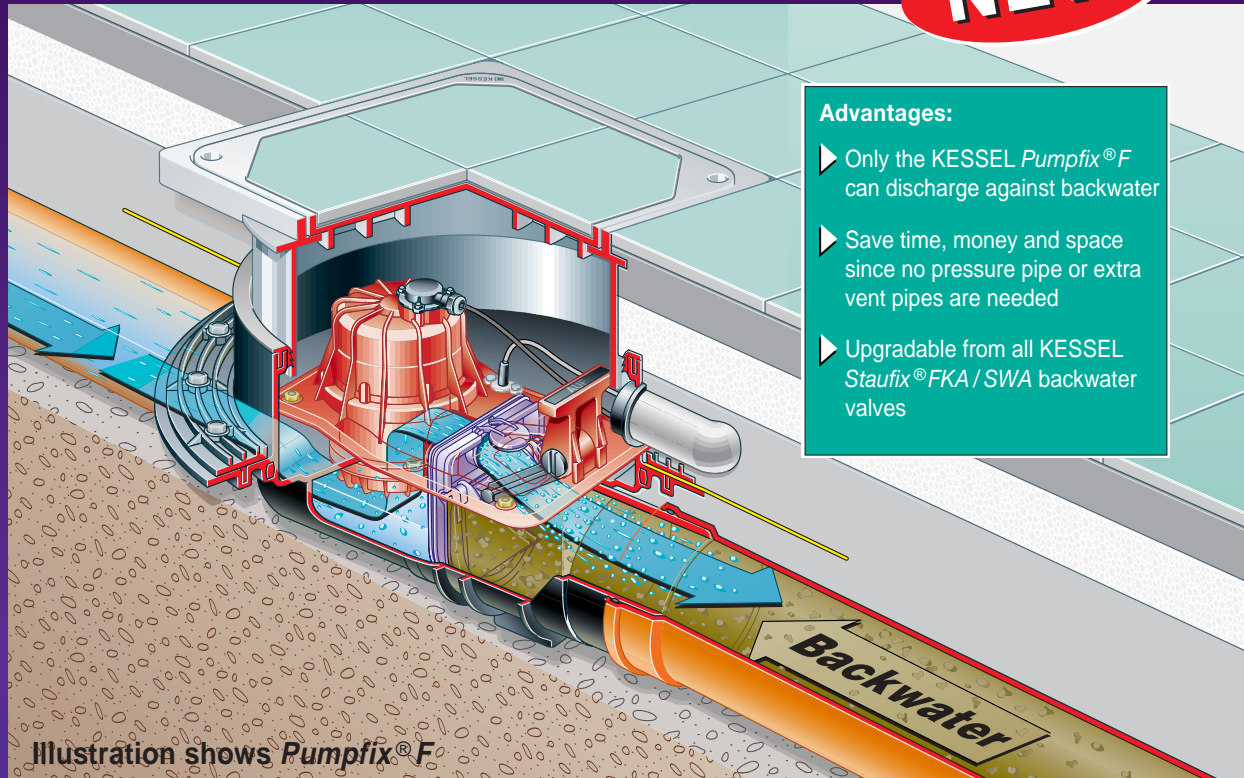


Reliable wastewater discharge during backwater

The new KESSEL *Pumpfix*[®]*F* backwater valve - now your cellar is always dry!

NEW

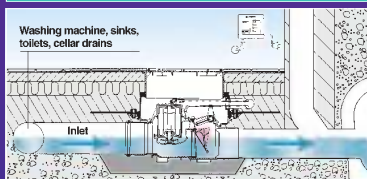


Advantages:

- ▶ Only the KESSEL *Pumpfix*[®]*F* can discharge against backwater
- ▶ Save time, money and space since no pressure pipe or extra vent pipes are needed
- ▶ Upgradable from all KESSEL *Staufix*[®]*FKA* / *SWA* backwater valves

Illustration shows *Pumpfix*[®]*F*

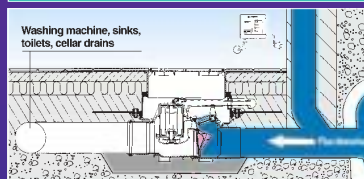
Function of backwater pumping unit



1. Normal conditions

During normal drainage conditions, when wastewater freely flows from a building by the force of gravity, the *Pumpfix*[®]*F* functions as a backwater valve. The free hanging backwater flap is opened by the force of the flowing wastewater which flows unimpeded and unstrained through the valve and out of the building.

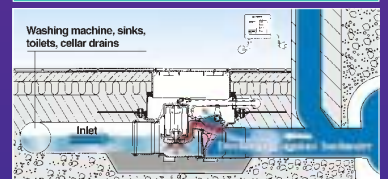
Backwater flap closed



2. Backwater protection

During times of backwater, the free hanging backwater flap is forced shut by the force of the backwater. This provides a complete seal against the back-up of backwater into a building.

Discharging against backwater



3. Discharging of wastewater during times of backwater

With the free hanging backwater flap closed during backwater, the wastewater of a building has no means of exit. As a building's fixtures are drained the rising wastewater level is sensed by the *Pumpfix*[®]*F*'s optical probe which activates its sewage pump. The wastewater is macerated by the *Pumpfix*[®]*F*'s cutting blades and discharged against the backwater pressure and out of the building.

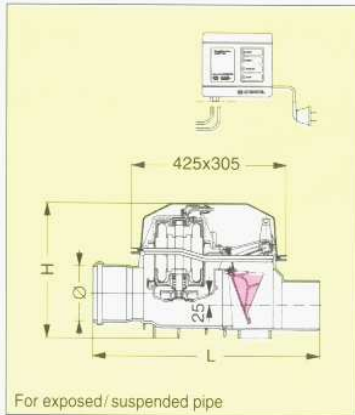
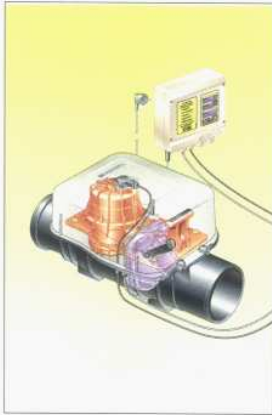


KESSEL
Everything for drainage

KESSEL Pumpfix® F backwater valve with integrated sewage pump for wastewater with or without sewage

The KESSEL Pumpfix® F backwater valve is a newly developed, fully tested backwater valve with integrated sewage pump.

Product



For exposed/suspended pipe

Product Description

KESSEL Pumpfix® F backwater valve for wastewater with or without sewage
 Sizes Ø 110/Ø 125/Ø 160

For installation in an exposed/suspended pipe

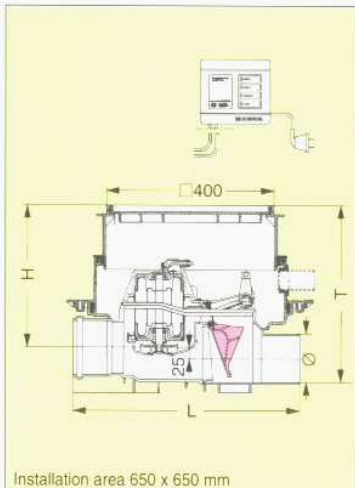
Backwater valve with integrated sewage pump (1 kW / 230 V), free hanging backwater flap, for wastewater with or without sewage, with protective cover. Control unit (splash class IP 54) with SDS (Self Diagnosis System) with battery back-up for alarm notification of backwater during power failure.

Total weight approx 20 kg / 44 lbs.

Dimensions:

Ø	Ø 110	Ø 125	Ø 160
L	545 mm	555 mm	585 mm
H	343 mm	343 mm	343 mm

Nom. diam Ø = O.D. mm Outlet	Order No.
Ø 110	28 100
Ø 125	28 125
Ø 160	28 150



Installation area 650 x 650 mm

KESSEL Pumpfix® F backwater valve for wastewater with or without sewage
 Sizes Ø 110/Ø 125/Ø 160

For installation in a concrete slab/floor

With rotatable, twistable and vertically adjustable upper section and watertight plastic cover (load class 1.5 tons). Backwater valve with integrated sewage pump (1 kW / 230 V), free hanging backwater flap, for wastewater with or without sewage. Choice of covers, available with extension sections and water proof flange. Control unit (splash class IP 54) with SDS (Self Diagnosis System) with battery back-up for alarm notification of backwater during power failure.

Total weight approx 25 kg / 55 lbs.

Dimensions:

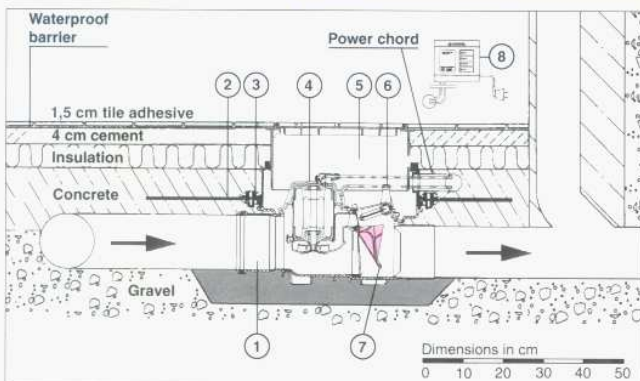
Ø	Ø 110	Ø 125	Ø 160
L	545 mm	555 mm	585 mm
H	292-362 mm	285-355 mm	268-338 mm

With black cover

Ø 110	28 100 S
Ø 125	28 125 S
Ø 160	28 150 S

With recessed cover

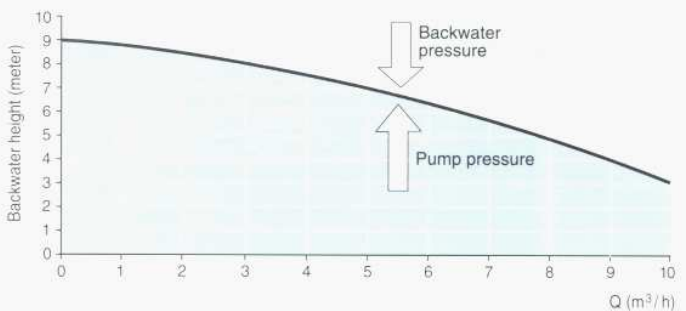
Ø 110	28 100 X
Ø 125	28 125 X
Ø 160	28 150 X



- | | |
|---|-------------------------------------|
| ① KESSEL Pumpfix® F backwater valve | ⑥ Manual closure lever |
| ② Waterproof barrier (Order No. 83019) | ⑦ Free hanging backwater flap |
| ③ Waterproof barrier flange | ⑧ Control unit with battery back-up |
| ④ Sewage pump with macerator | |
| ⑤ Upper section with Class A cover (1.5 tons) | |

Performance curve Pumpfix® F

Volume Q (m ³ /h)	0	3	5	6,5	7,8	9	10
Height H (meter)	9	8	7	6	5	4	3



Current	Voltage	Current	Performance P1/P2	Revolutions	Motor protection	Plug
Alternating	230 V	4.9 A	1000 W/550 W	2800 min ⁻¹	thermal	grounded



KESSEL GmbH · Bahnhofstraße 31 · D- 85101 Lenting
 Tel. +49 (0) 84 56 / 27 195 · Fax +49 (0) 84 56 / 27 188
 http://www.kessel.de · e-mail: export@kessel.de
GERMANY

The complete KESSEL program

- ▶ Backwater valves and cleanouts
- ▶ Polymer and cast iron drains
- ▶ Volatile liquid traps
- ▶ Lifting stations, pumps, warning and control units
- ▶ Rainwater management systems
- ▶ Grease and starch separators
- ▶ Inspection chambers
- ▶ Custom projects for industrial applications
- ▶ Polymer pipe fittings
- ▶ Stainless steel drains and channels

Your Distributor: